



# 80MM SERIES THERMAL RECEIPT PRINTER

-INSTRUCTION MANUAL

## 1. Safety Notice:

- \* Don't touch the printer head with anything.
- \* Don't touch the cutter blade.
- \* Don't bend the power cord excessively or place any heavy objects onto it.
- \* Don't use the printer when it is out of order. This can cause a fire or and electrocution.
- \* When connecting or disconnecting the plug, always hold the plug but not the cord.
- \* Keep the desiccant out of children's reach.
- \* Use only approved accessories and do not try to disassemble, repair or remodel it by yourself.
- \* Install the printer on the stable surface. Choose firm, level surface where avoid vibration.
- \* Don't let water or other foreign objects into the printer.
- \* Don't connect a telephone line into the peripheral drive connector.
- \* We recommend that you unplug the printer from the power outlet if no use it for a long period.

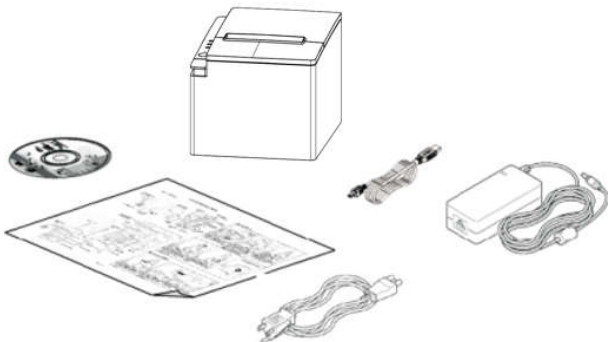
## 2. Applications:

- \* POS system Receipts
- \* EFT POS system Receipts
- \* Gym, post, hospital, civil aviation system Receipts
- \* Inquiry, Service system Receipts
- \* Instrument test Receipts
- \* Tax, Tab Receipts

## 3. Unpacking

After unpacking the unit, check that all the necessary accessories are included in the package.

- **User's Manual** 1 PCS
- **Printer** 1 PCS
- **Data Cable** 1 PCS
- **Power Adapter (include power cord)** 1 SET
- **Windows driver CD disk** 1PCS



## 4. Features

- \* 200-250mm/sec high-speed printing
- \* Support Kitchen Printing and Ethernet Printing
- \* High print quality
- \* Low working noise
- \* Support cashdrawer kick-out
- \* Easy maintenance
- \* Various interface available (Serial + USB + Ethernet + Bluetooth)
- \* Built-in data buffer
- \* Support character enlargement, bold, underline, line spacing and character spacing
- \* Support NV images download
- \* Low energy consumption and low operation cost
- \* Compatible with ESC/POS command set
- \* Character per line and character settings
- \* Support Ethernet Printing status monitor, multiple connection printing and OPOS printing
- \* Support printer identification, software binding and high-speed driver mode
- \* Support various character sets (include GB18030)
- \* Support paper end detection
- \* Support Win9X/Win2000/Win2003/Win Vista/ Win7/Window XP/win8/Win8.1/Win10/Linux/Android/IOS device connection



**Support paper end detection**



**High-speed Printing**



**Printer Identification**



**Multiple Connection Printing**



**Driver**



**Various Character Sets**

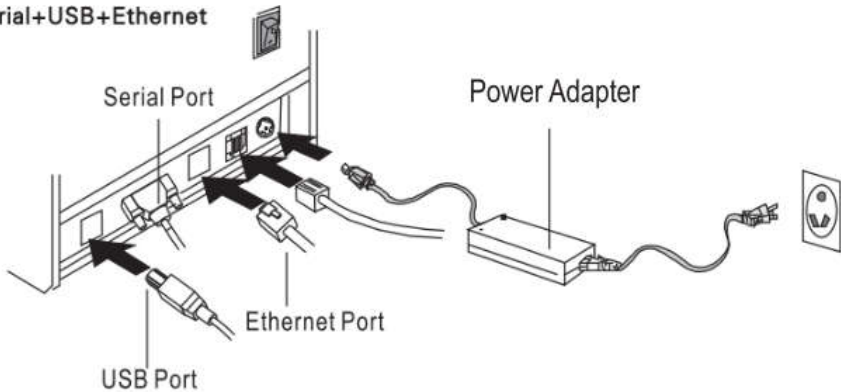
## 5. Specifications

<b>Model</b>	Thermal Printer
<b>Print method</b>	Direct Thermal line
<b>Print density</b>	576dot/line
<b>Print speed</b>	250mm/sec
<b>Print Resolution</b>	8dots/mm(203DPI)
<b>Print width</b>	72mm
<b>Paper thickness</b>	0.06~0.08mm
<b>Paper diameter</b>	83mm
<b>Print interface</b>	Serial + USB + Ethernet Serial + USB + Ethernet + Bluetooth(optional)
<b>Barcode type</b>	UPC-A/UPC-E/JAN13(EAN13)/JAN8(EAN8)/ CODE39/ITF/CODEBAR/CODE93/CODE128 / QRCODE
<b>Buffer</b>	Data: 8K , NV Flash: 256K
<b>Font type</b>	International fonts /Simplified Chinese GB18030 / Traditional Chinese Big5
<b>Font size</b>	ANK Character: Font A: 12x12dot, Font B: 9x17dot; Chinese: 24x24dot
<b>Print command</b>	ESC/POS compatible
<b>Power supply</b>	AC 110V/220V, 50~60Hz
<b>Power adapter</b>	DC 24V/2.5A
<b>Cash drawer</b>	DC 24V/1A
<b>Work environment</b>	Temperature: 5~45°C, Humidity: 10~80%
<b>Storage environment</b>	Temperature: -10~50°C, Humidity: 10~90%
<b>Dimension</b>	175×138×124 mm(L×W×H)

## 6. Printer Connection

- a. Plug the DC cord connector into the printer's power connector.
- b. Plug the data cable connector into the printer's interface connector.
- c. Plug the drawer cable into the drawer kick-out connector on the back of the printer next to the interface connector.

### Serial+USB+Ethernet



### 6.1 Communication Ports

#### 6.1.1 Universal Serial Bus (USB Port)

Connect the printer with the standard USB cable ( USB device types are automatically ),once printer is connected with the PC, install the driver , then choose the corresponding port accordingly.

#### 6.1.2 RJ45 Ethernet Port (10M/100M)

With this port, we can use the network cable and connect the computer directly, communication and the port number is 9100;

#### 6.1.3 RS232 Serial Port

RS-232 is developed according to the EIA standard asynchronous transmission, the specification as following:

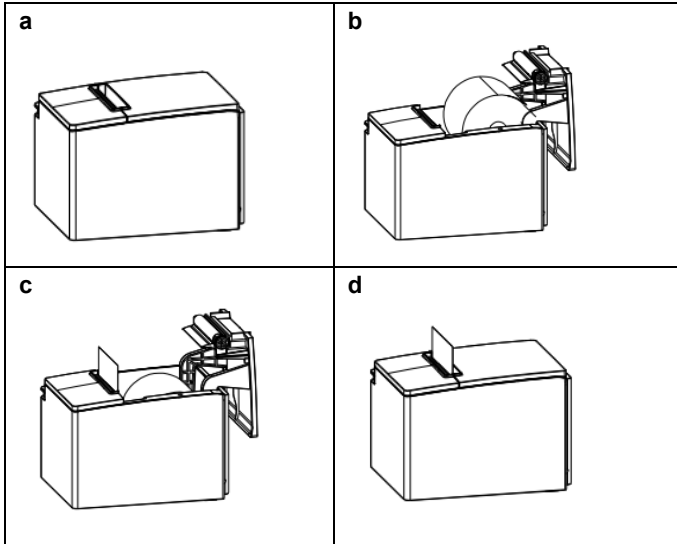
- Data transmission: serial interface
- Synchronization: asynchronous
- Signal Level: +5.4V Serial RS232 Level, logic 1:-5.4v, logic 0: +5.4V
- Hardware Flow Control: Hardware
- Baud Rate: 9600 bps , 19200 bps, 38400 bps, 115200bps( Optional )
- Data Length: 8 Bits
- 1bit Stop Bit: 1Bit
- Parity: None

Consumer can get the current default baud rate from “ Print Test Page ”and also can adjust the baud rate via G80 Utility tool

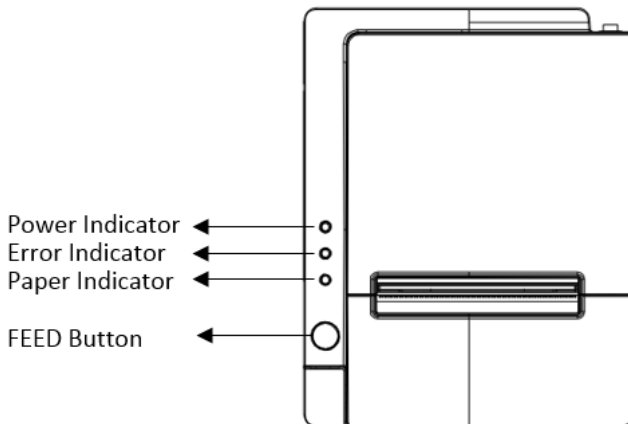
Remarks: The same serial port is used by Bluetooth and RS232. If the installed Bluetooth module is detected when starting up, the baud rate of the serial port is automatically set to 416500bps.If no Bluetooth module is detected, the default baud rate for the serial port is 19200bps.The specific rate is subject to the display on the self-check page.

## 7. Installing the roll paper

- a. Open the printer cover.
- b. Install the roller in the roll paper, and put them into the printer.
- c. Pull out some paper outside the printer and then close the printer cover.
- d. Close the top cover. Press the printer cover to avoid error position of roll paper.



## 8. Buttons and Indicators



## 9. Functions of buttons and indicators

### (1) FEED Button

Press to feed paper manually.

### (2) PAPER Indicator

When this indicator is lighting as well as the ERROR indicator, printer is out of paper.

When this indicator is dim as well as the ERROR indicator, printer has paper.

When this indicator is lighting but the ERROR indicator is dim, roll paper is near end.

### (3) POWER Indicator

When this indicator lights, the printer is turned on.

When this indicator dims, the printer is turned off.

### (4) ERROR Indicator

When printer is in the status of paper out, cutter error or print head overheat, this indicator is flashing according to user's defined setting.

## 10. Cutter Maintenance

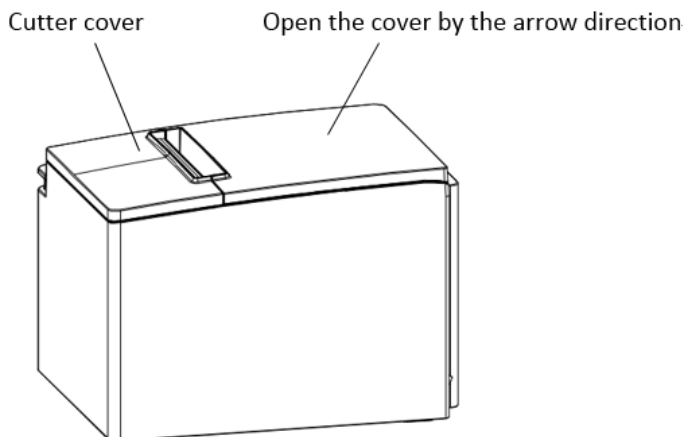
### Step (1)

a. Turn off then on the printer, the printer will initialize and reset the cutter.

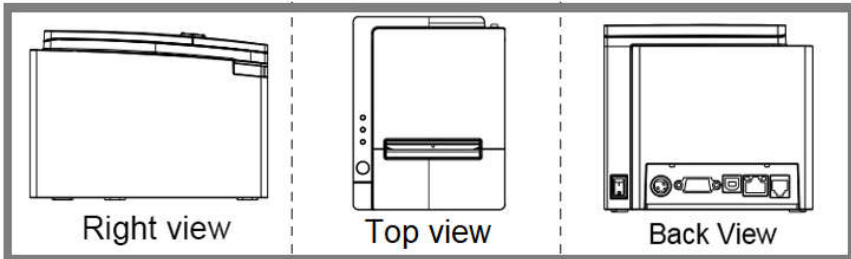
### Step (2)

a. Open the front cover.

b. Wheel the gear on the cutter to make the cutter back to initial position. Open the printer cover and install roll paper correctly, then the printer works normally.



## 11. Printer view



## 12. Connect the Bluetooth

The high edition can be connected to the mobile phone APP via Bluetooth to print Recipe. After installing the Android APP, the software itself has built-in standard printing formats of various Recipe.

- a. Start the printer and press the function button of the printer. The printer prints out the interface information. In the receiving message, the printer's Bluetooth address can be checked.

```
Interface:
  USB(Virtual Printer)
  Serial 461500, None, 8, 1
  Ethernet
  Bluetooth

IP Configuration:
  Protocols: TCP/IP Version 4
  Host Name: P25
  MAC Address: 00-54-84-38-8B-04(Hex)
  IP Address: 192.168.1.249:9100
  Subnet Mask: 255.255.255.0
  Gateway Addr: 192.168.123.1

Bluetooth Configuration:
  Device Name: Printer_1269
  MAC Address: DC:10:30:00:12:6B
  PIN Code: 0000
```

- b. Download the APP software and install it on the phone.  
c. Connect printer and set Bluetooth in the APP
- Open APP click Settings, and then click "setup Bluetooth";
  - Click "scan Bluetooth", and then select the corresponding printer connection.  
Note: The printer Bluetooth Name can be viewed by printing the self-check test page Bluetooth Name
  - Select the pairing code for the input device then enter "0000"
  - Display is connected, after connection, can push the back button of device to the graphic, edit the printer.

Note: The Bluetooth name and password should be changed according to the actual requirements, except for special requirements, it is generally not recommended to change.



### 13. Driver Installation

#### Thermal Receipt Printer Driver v1.0

Insert the bundled CD disk into the CD-ROM drive, click Thermal Receipt Printer Driver v1.0 file to begin driver installation .

**a. Click Next**

**b. Select the operation system that you're using**

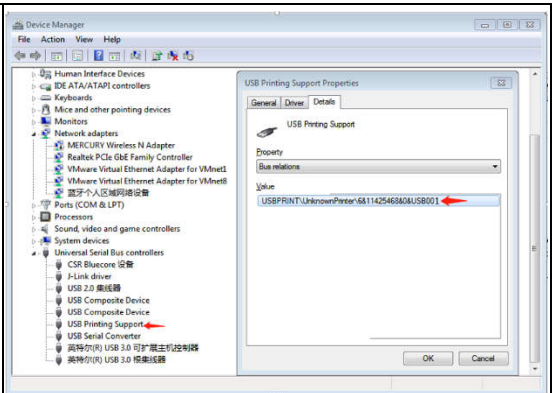
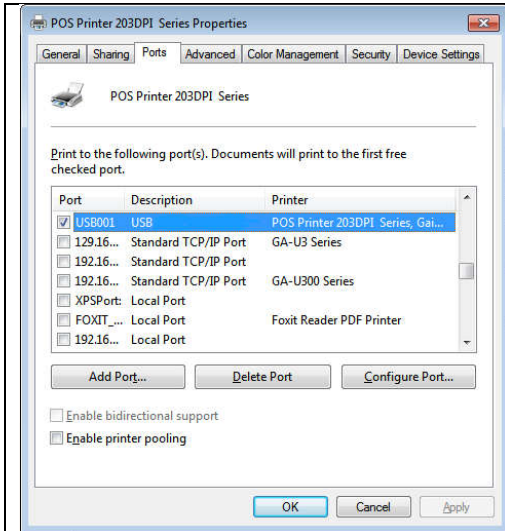
**c. Select the driver POS Printer 203DPI Series and click next**

**d. Select the corresponding printer port**

**e. Complete the setup**

**f. Finish the driver installation**

### 13.1 USB Port Connection ( If your desired port is USB )

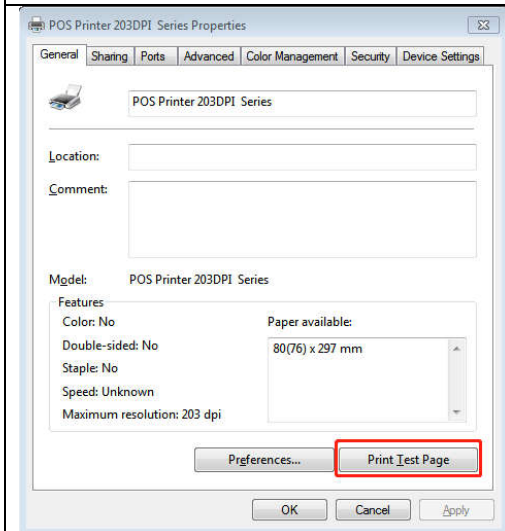


a. Open “ Properties “ then choose “ Ports”

We can see many USB ports if there is other USB printer used in this PC. Select the unoccupied USB port and click “Apply”

Remarks: Ensure the printer is power on & cable connects to the computer for the 1st time use. Or we can not find “ USB00x” ; check if we can find “ USB Print supporting ”in below location :

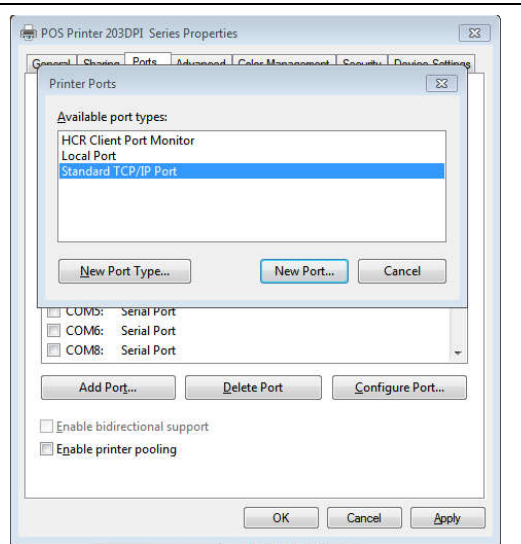
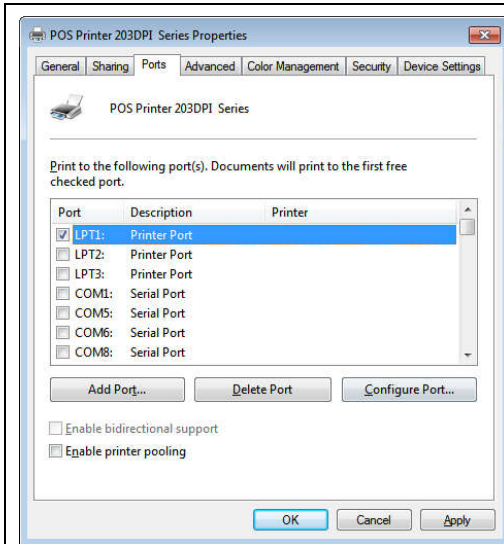
Path: My Computer - Properties - Management - Devices Manager - Universal Serial Bus Controller ), if not, please recheck the cable and printer connecting way.



If the print test page works well, that mean all setting is ok. Remarks: If “ Printer Error “ , we should back to “ Ports” and try the USB ports one by one until it is ok.

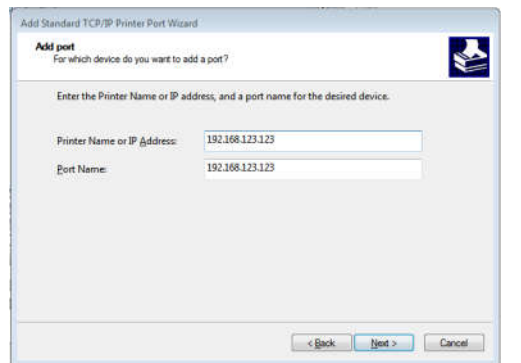
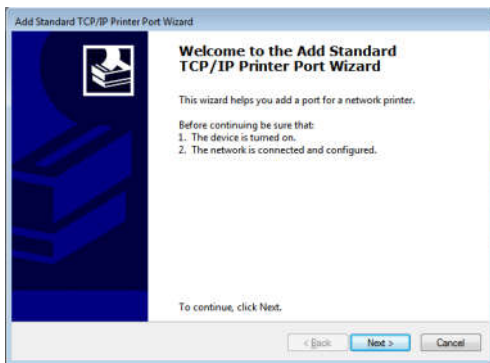
b. Click “ General ” and let back to this step then “ Print Test Page

## 13.2 Ethernet Connection ( If your desired port is Ethernet )



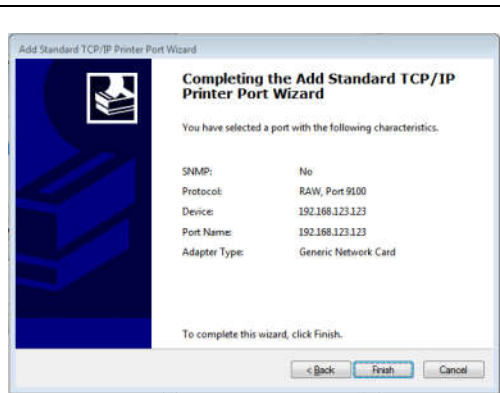
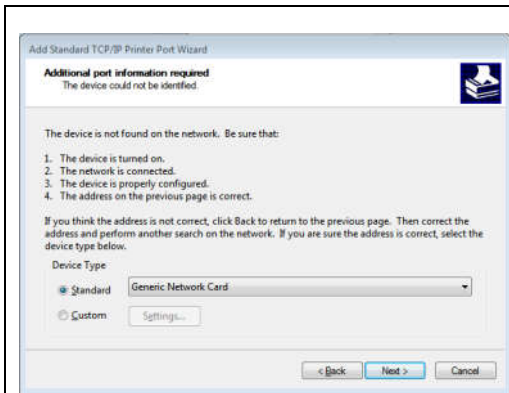
a. Get the IP address from a Self Printing Test Paper  
Switch off the printer then press “FEED” button and do not release. Press the “POWER” button at the same time till the “ ERROR” indicators on, release the button about 1 second after the “ERROR” indicators off. Then we can read the current setting from the self printing page ( Default IP Address is: 192.168.123.100 ) .Open “ Properties” then click “ Ports ”

b. Select “ Add Port” we can see below image , Click “New Port” ,



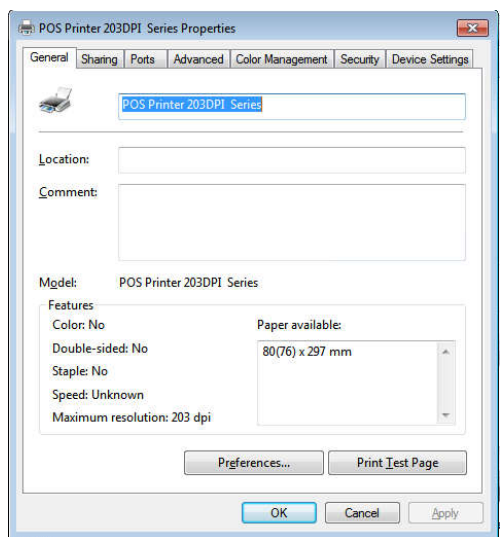
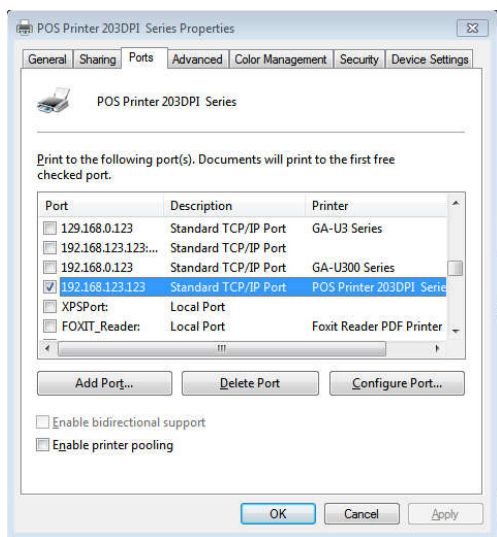
c. Click “ Next ”

d. enter into the printer IP address



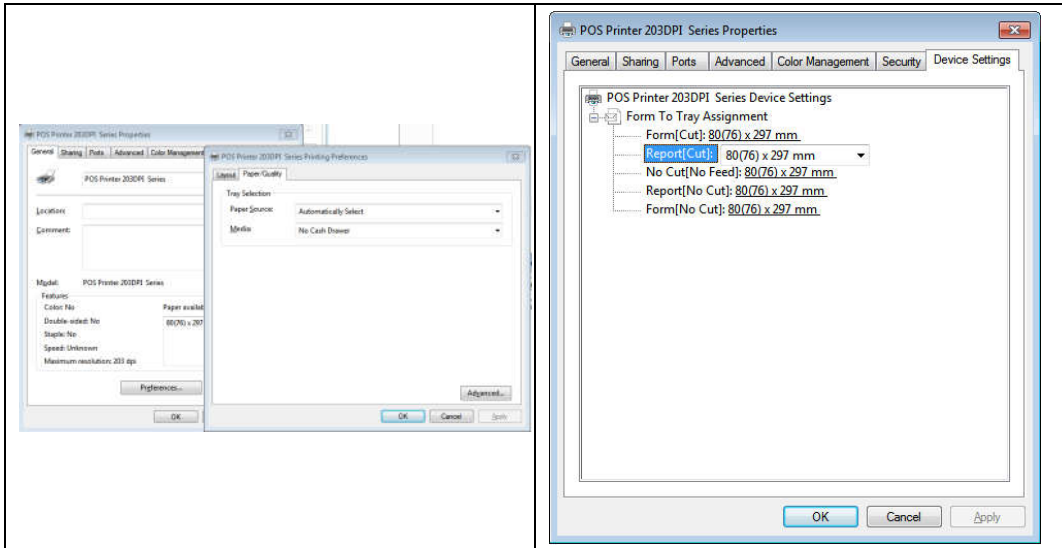
e. choose “Generic Network Card” then click “Next”

f. Then you can check the image as above



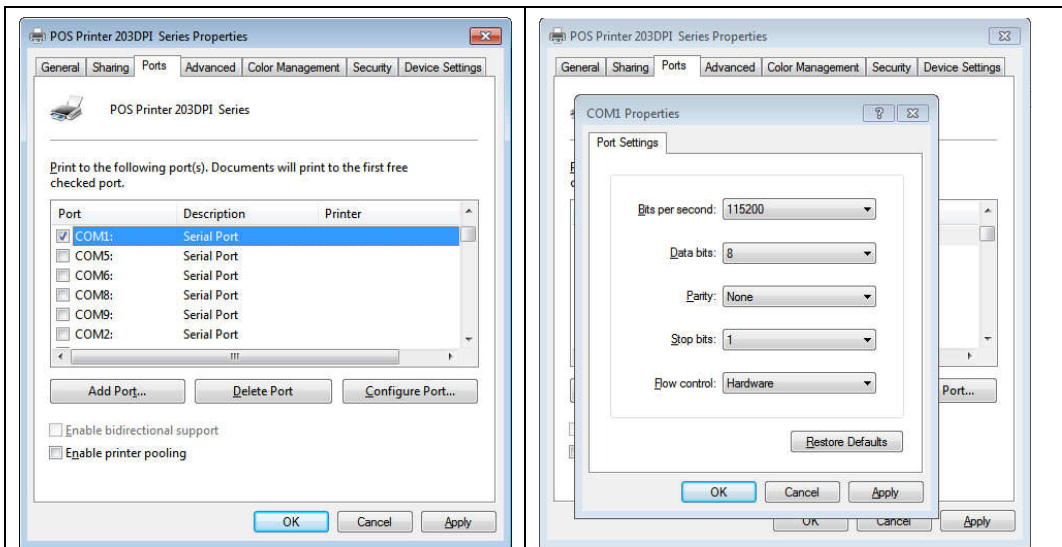
g. Click Finished and we can check the added ports as above image

h. Let's back to “General” and click “Print Test Page”



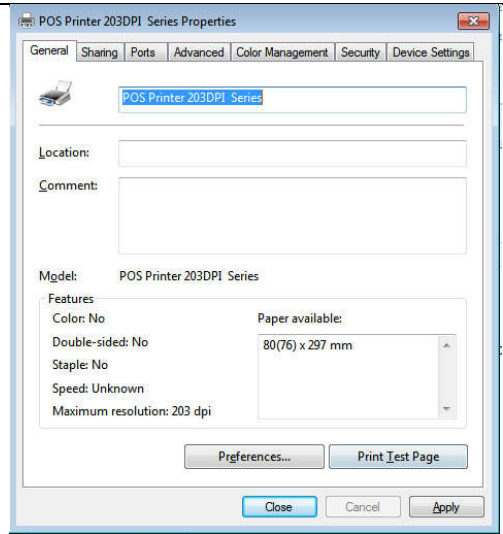
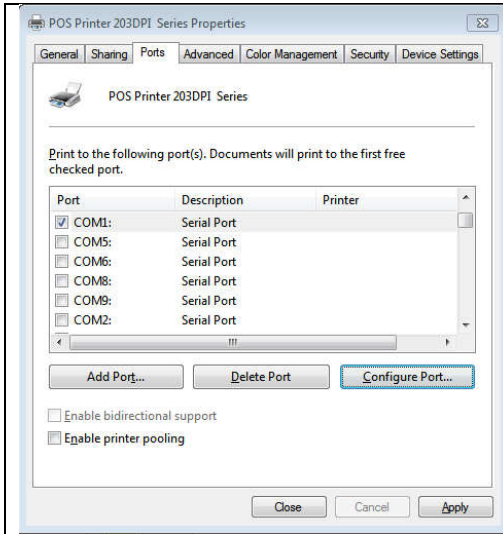
If the print test page works well, that mean all setting is ok.  
 We can also change the setting by "Preference" and "Device Settings" ( print method setting ,cash drawer setting, paper cutter setting etc )

### 13.3 Serial Port Connecting ( If your desired port is Serial )



a. Following "Printer - Properties - Ports" as below

b. Select "COM1" - "Configure Port" - default setting as above image



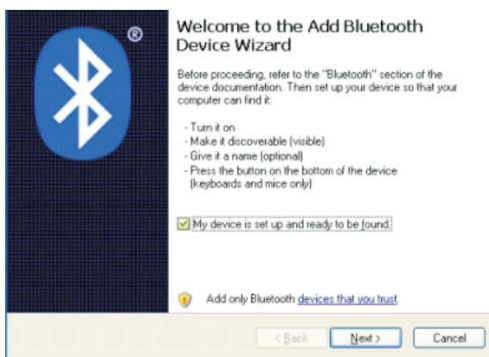
c. We should refer to the default baud rate from the self test page and input the same baud rate above or there will be error in the printing. Once setting parameters confirm, click "Apply" we come to above image;

d. Back to "General" and try "Print Test Page" If the print test page works well, that mean all setting is ok.  
Try below setting if we the printing speed is too slow:  
- "Device Settings" ---- "Print Mode" ---- select "Print as soft font"

### 13.4 Bluetooth port to be used (if you choose models support Bluetooth printing)


a. Make sure you are using the device (such as a laptop) is Bluetooth-enabled, then activate Bluetooth, Bluetooth started successfully, you can see the computer icon on the bottom right of the display.

b. Power on the Bluetooth printer.



c. To add the Bluetooth printer, please left-click the - click "Add a Bluetooth Device" ,then you will enter wizard screen , please choose "My device is set up according and ready to be found " click "Next"

d. If you can see screen as below, then the device is searching the Bluetooth printer, please wait.

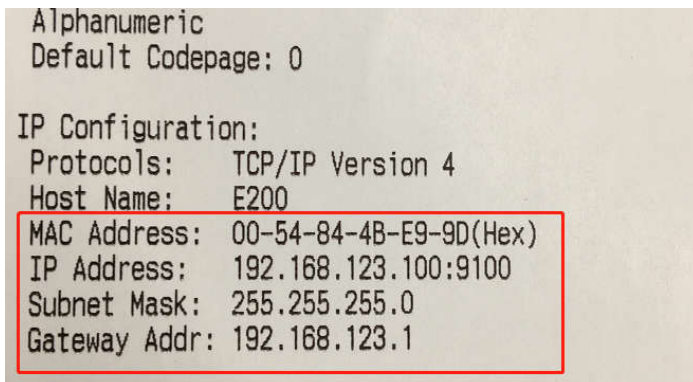
<p>e. Once the Bluetooth printer is found. You can see it listed on the screen, here, for example, Bluetooth printer is successfully found. Please click “-Bluetooth printer”, click “Next”</p>	<p>f. Choose “Let me choose my own passkey”, then enter “0000”(this is factory default passkey, if you want to change it, you have to inform us to set the new passkey for you in our factory before shipping),then click “Next”</p>
	
<p>g. If you can see the screen as below, that means the Bluetooth printer is already connected. Please notice the assigned COM ports ,then Click” Finish” (Note: The Bluetooth device will automatically assign a COM port.)</p>	<p>h. Now if you want to test if the printer is OK to print, you could use a com tool , and send printed data to outgoing COM port( just as above image shown: COM5). (Com tool setting is 115200,N,8,1.)</p>

#### 14. Ethernet IP Address Setting

According to the self-inspection page title selection method of IP Settings:

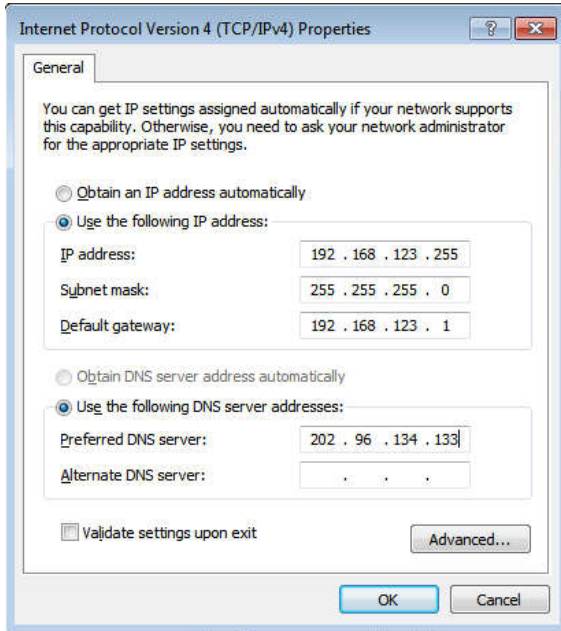
If print by Ethernet interface, the printer needs to be modified Mac, IP, subnet mask, gateway, we can do it by tool, please check the steps as follows:

- a. Connect the printer with computer by crossover cable, such as a router connection, printer and computer are both connected to the router.
- b. Press the "FEED" button while turn on the printer power switch, and when "PAPER OUT" indicator light, release the "FEED" button, the printer will be printed a self-test page, then you can check the relevant information of printer as below image shown:

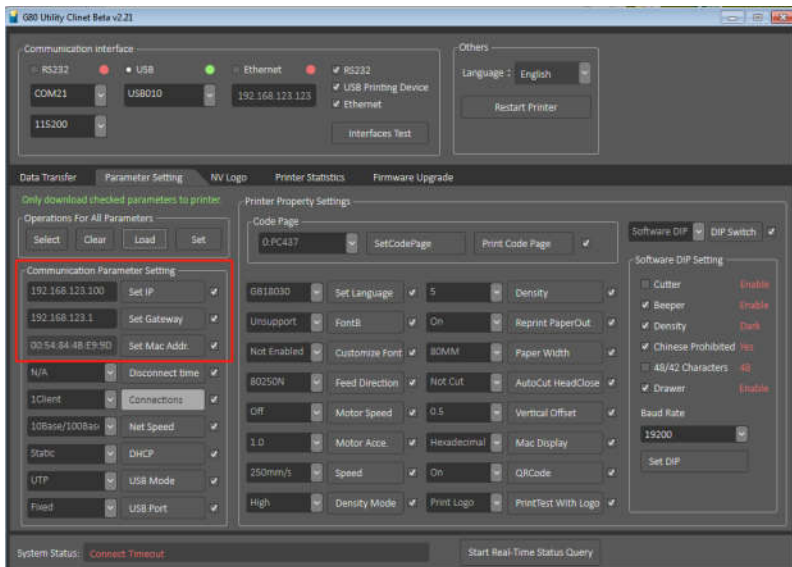




- c. Modify the IP address of the computer, make sure that the printer is in the same network segment, and the subnet mask and gateway should be the same as printer. As shown in below, and then press the "OK"



- d. open the CD to find "tool" -- "G80 Utility" for setting up the printer, open the software below: ,





Step 1:

Connect the printer,

Step 2:

Click the “Load” button, and get the printer IP (the default IP address is 192.168.123.100)

Step 3:

Can be modified the relevant parameter of printers ( IP, Subnet mask, Gateway, MAC), After all the setting are done, please power off and restart the printer.

Step 4:

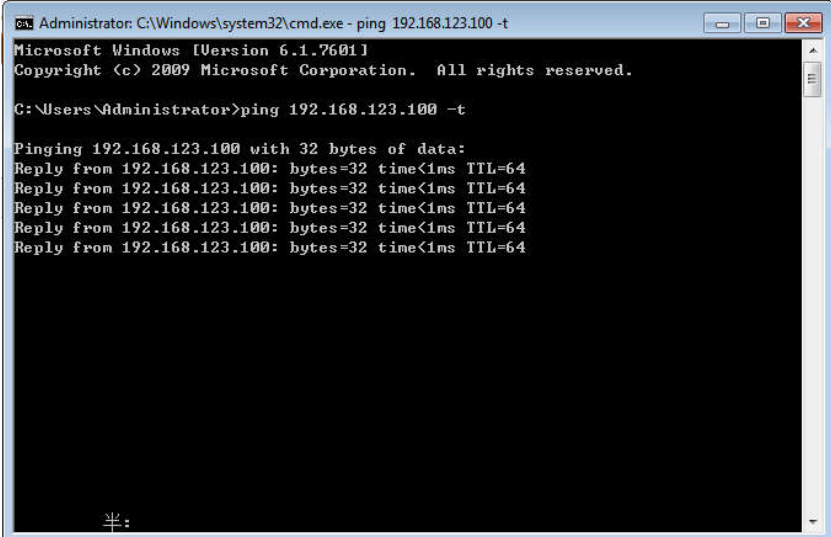
About the printer “Function Set”, you can set Print Mode (Chinese/ASCII), Beep Set (ON/OFF), Cutter set (ON/OFF), Print Density (Level 1 to Level 4), Serial Baud Rate (9600, 19200, 38400, 57600, 115200), After all the setting are done, please power off and restart the printer.

Step 5:

You also can do the “Factory Reset” and print the “Self-test page” by this tool.

If all is done, please close the tool

- e. Click computer “Start” “ Run”, Input word “CMD”. Input “ping 192.168.123.100 -t” . If details shows as below , means connection is Ok




```
Administrator: C:\Windows\system32\cmd.exe - ping 192.168.123.100 -t
Microsoft Windows [Version 6.1.7601]
Copyright (c) 2009 Microsoft Corporation. All rights reserved.

C:\Users\Administrator>ping 192.168.123.100 -t

Pinging 192.168.123.100 with 32 bytes of data:
Reply from 192.168.123.100: bytes=32 time<1ms TTL=64
Reply from 192.168.123.100: bytes=32 time<1ms TTL=64
Reply from 192.168.123.100: bytes=32 time<1ms TTL=64
Reply from 192.168.123.100: bytes=32 time<1ms TTL=64
Reply from 192.168.123.100: bytes=32 time<1ms TTL=64

半:
```



**Warning:** The contents of this manual shall not be changed without consent. We reserve the right to change the products in terms of technology, components, software and hardware. Users may contact the reseller if they need further information about the product. No section of this manual may be reproduced or transmitted in any form or by any means without permission.